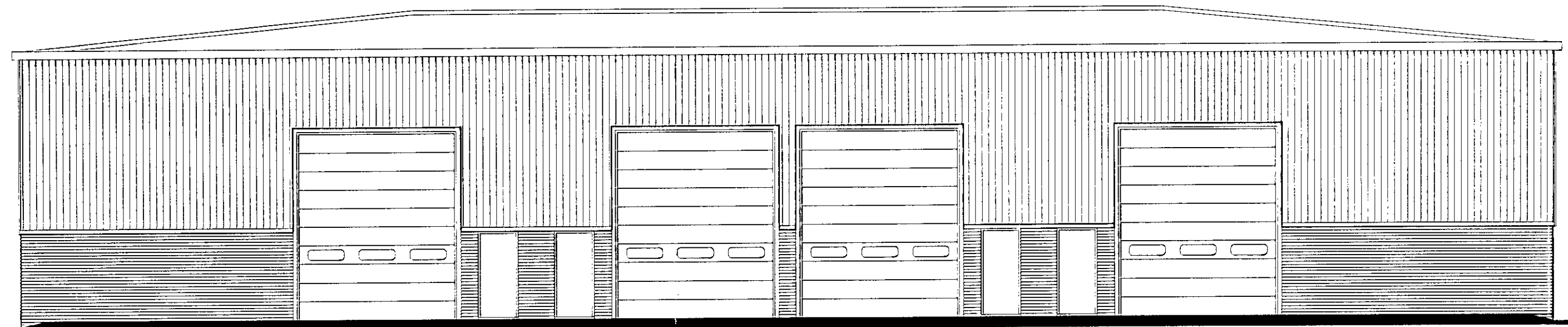
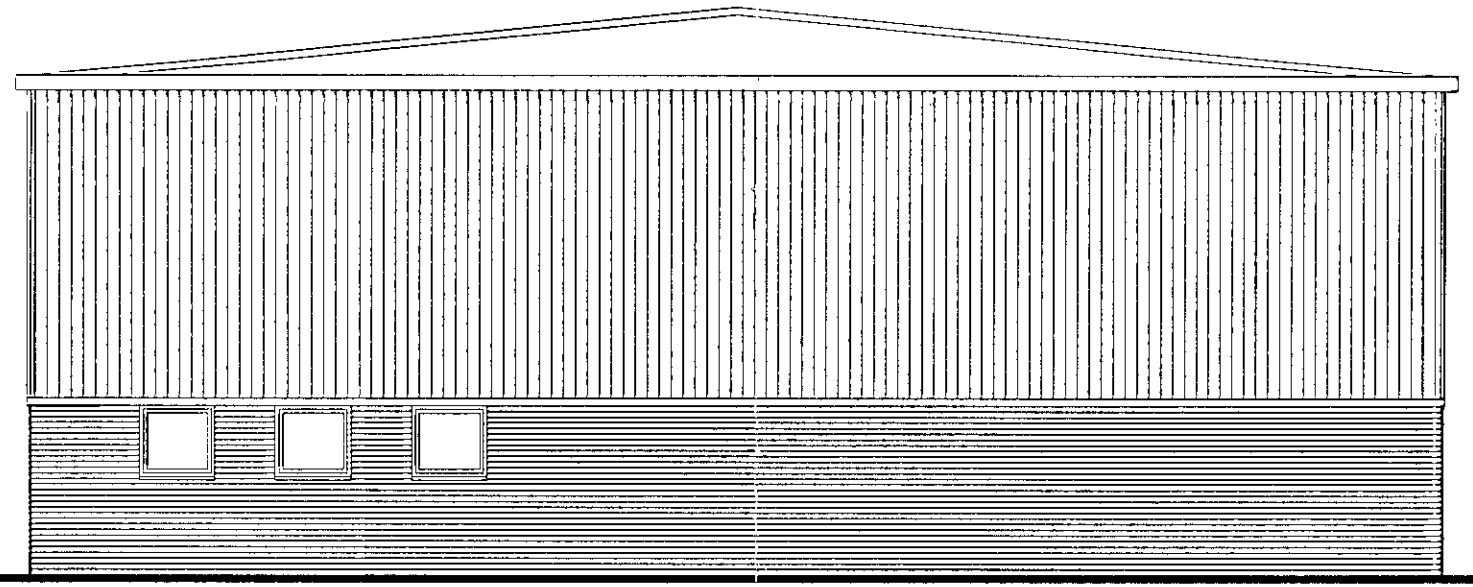


This drawing is the copyright of Cheney & Thorpe and should not be copied or reproduced without written consent. All dimensions are to be checked on site prior to fabrication and the Architect notified of any discrepancy. Do not scale from this drawing.

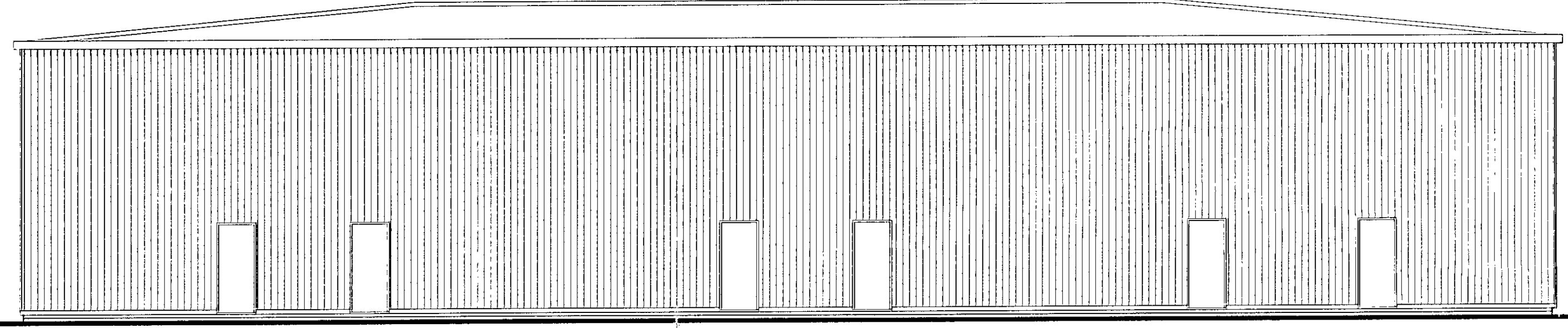
08/0207
 PLANNING SECTION
 15 FEB 2003



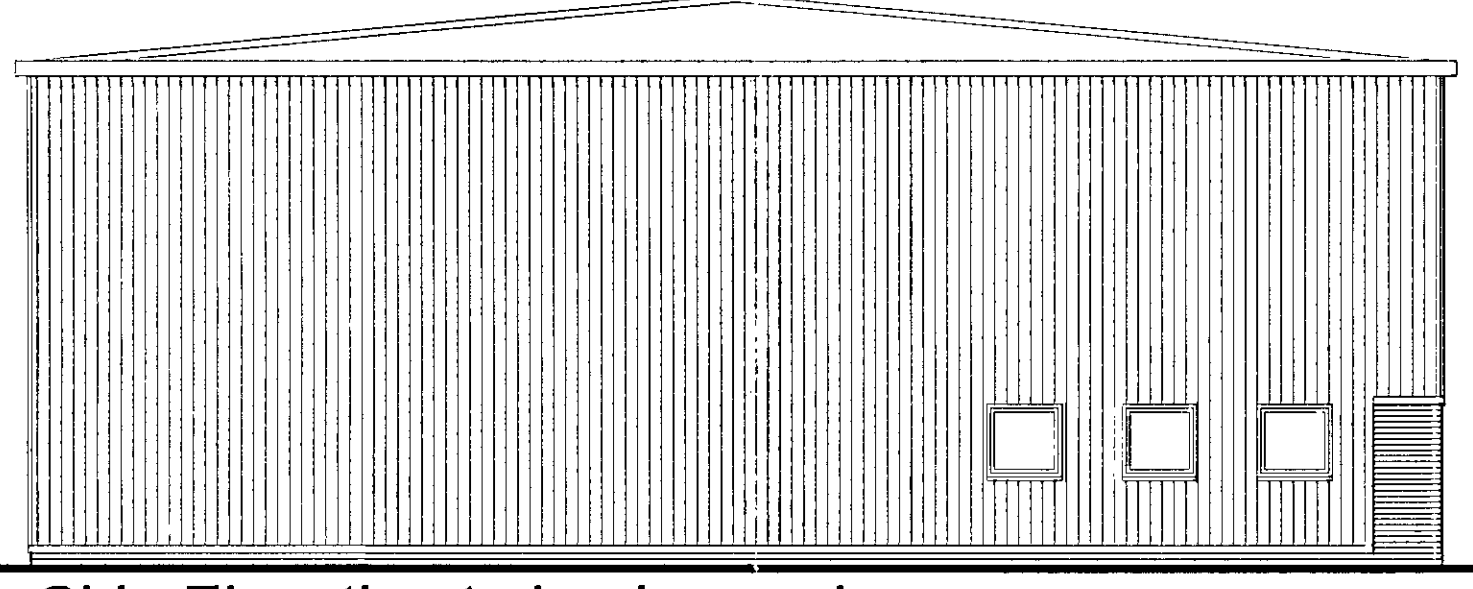
Front Elevation



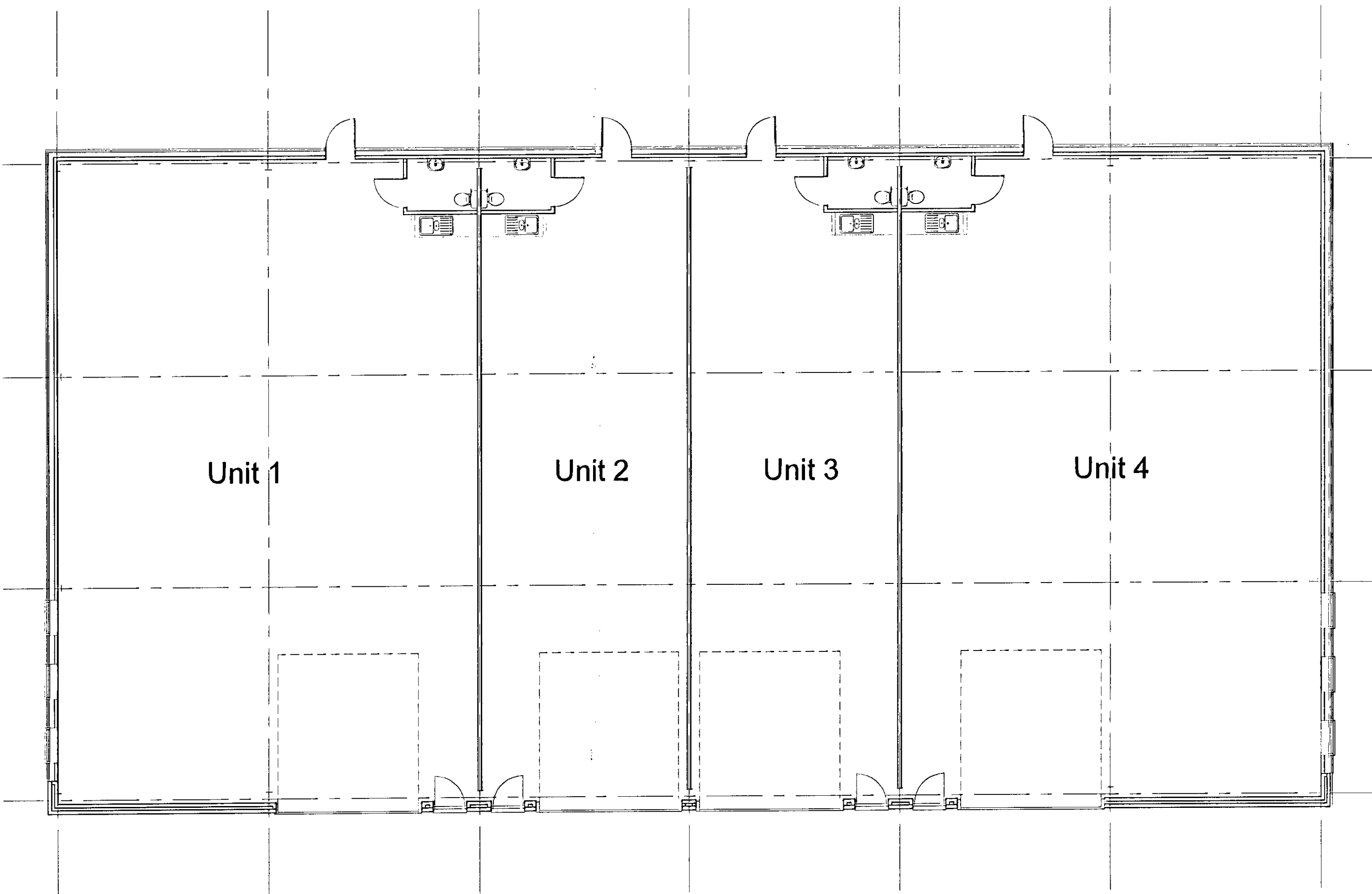
Side Elevation to car parking areas



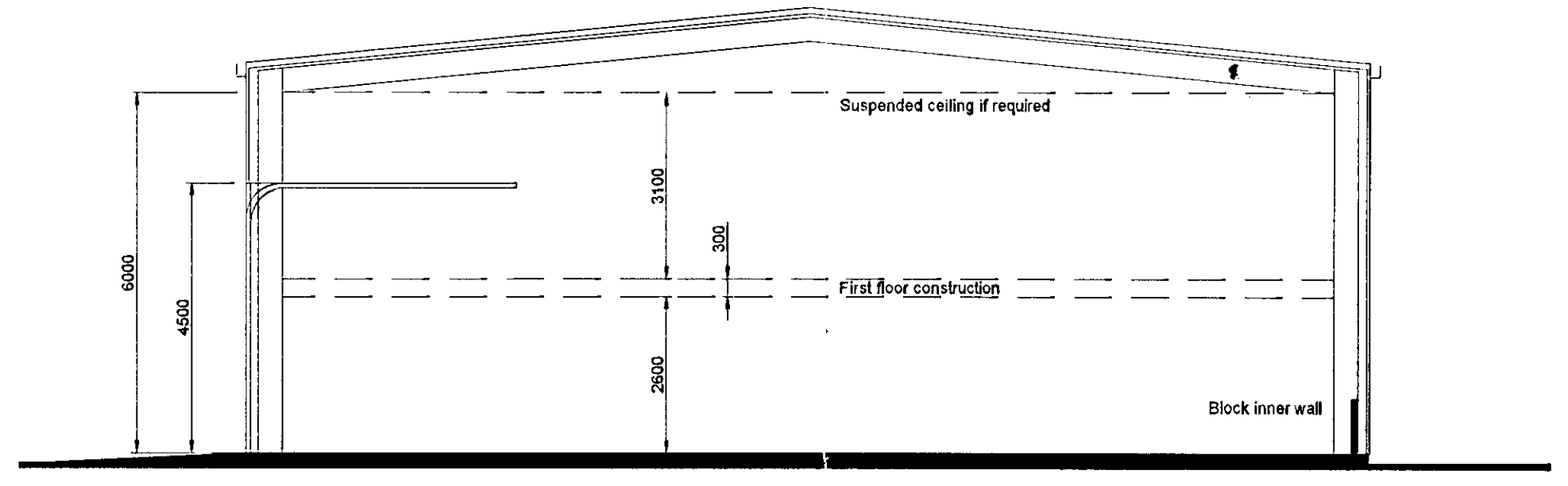
Rear Elevation



Side Elevation to landscaped areas



Floor Plan



Typical Section

UNIT TYPE C

Development - Land North of the River Stour
 Area G Sandwich Industrial Estate

A B	revisions	14/3/02
	Revisions to Roller and entrance doors and internal wc's Windows in personal doors remove, building height increased	19/3/02

project	Development - Land North of the River Stour Area G Sandwich Industrial Estate	
client	Ramac Holdings Limited	
title	Type C Plan and Elevations	
scale	date	drawn
1:100	21/2/02	SG Bourne

CHENEY THORPE & MORRISON Chartered Architects	
THE TRAMWAY STABLES RAMPART ROAD HYTHE KENT CT21 5BG tel 01303 290515 fax 01303 298214	
drawing no	rev
01.33.05	B